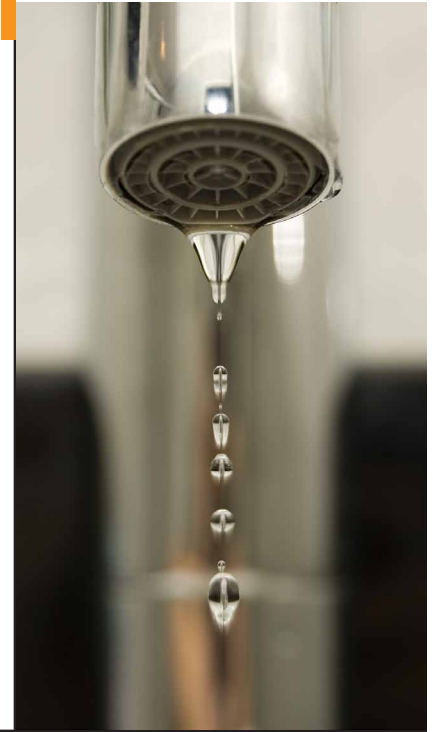




Learn More About the Products and Solutions Available From Noveda



Save. Sustain. Stay ahead.

Reduce energy and water use in buildings, without sacrificing comfort. Energy and water management solutions can help you save and reduce your footprint today.

The EPA reports that 30% of energy consumed in buildings is either wasted or inefficiently used. This is reflected in the following:

- The 400% variation in the intensity of energy use across buildings in the US, which is unexplained by age, technology, hours, size, or climate.
- The little or no improvement in the overall energy consumption since 1980, although efficiency of building components has increased by 30%.

There are several reasons for energy waste:

- Users are not aware where or when energy is being used.
- Utility bills are a month late, provide little information beyond payment history, and offer no insight into the

operation of the building.

- Building automation systems, when present, do not provide the detail or the analysis required to identify and eliminate energy waste.

Energy and water management solutions provide a 360° view of consumption patterns, in real-time. With real-time monitoring, customers can uncover the source of energy waste and gauge the impact of actions taken to eliminate waste.

Real-time monitoring can also be used to optimize water use. Efficiency in water usage influences multiple costs:

- Water unit costs
- Energy costs of heating water
- Wastewater costs

Save.

Reduce waste in energy and water use and realize savings.

Sustain.

Reduce carbon and water footprint and meet sustainability goals.

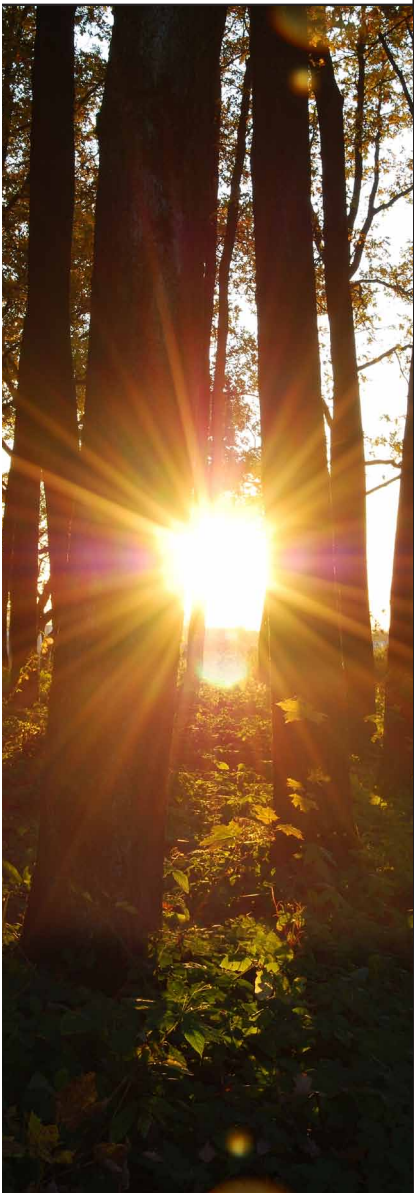
Stay ahead.

Reduce intensity of energy and water use and stay ahead of regulatory requirements, current or in the future.

Fact: Customers achieve 15% energy and water savings, on average, with the Noveda A+ solution.

Noveda's Energy & Water Management. Your 'A+ Solution'.

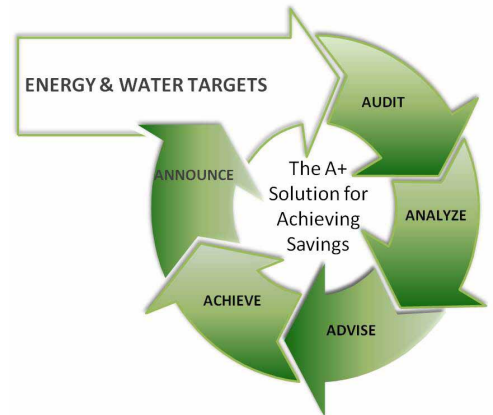
Our world-class team has built a portfolio of award-winning energy and water management solutions, that are easy to use and easy to implement. Contact us and start saving right away.



The end-to-end A+ solution:

- **Audit** of current consumption
- **Analysis** of real-time data to identify waste in energy and water usage
- **Advice** to drive energy and water savings
- **Achievement** of savings
- **Announcement** to stakeholders

Whether you are an industrial, retail or commercial enterprise, a government, utility or an educational institution, expect to realize energy and water savings with the Noveda A+ solution immediately; a software as a service (SaaS) solution that works right out of the box, with no software to maintain or upgrade, and data that is accessible from anywhere.



"We are able to monitor how much energy an elevator ride costs, how much energy the solar panels produce on a partly cloudy day, and even how much energy we save by turning off lights in little-used staff areas. In the first year of using the Noveda solution, we saved \$450,000 on our electric bill." - Dennis Hercel, Liberty Science Center

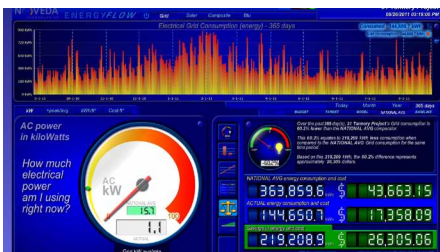
The Noveda Advantage

- Compatibility with all building automation systems (BAS), energy management systems (EMS), and utility meters
- Wide ecosystem of service, technology, and channel partners
- Large database of real-time energy and water data for benchmarking
- Stakeholder engagement and communication tools



Visualize the Details

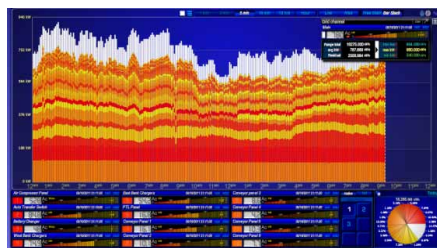
Actionable intelligence for audiences from the boiler room to the board room, and everyone in between.



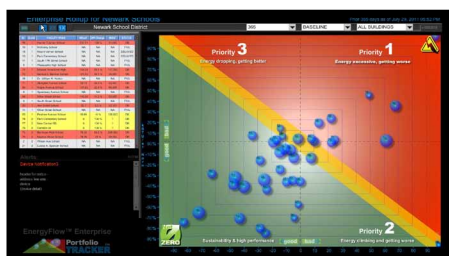
Monitor Multiple Resources with EnergyFlow

EnergyFlow Monitor tracks your building's energy (electricity, gas, steam, oil) & water use in real-time and at the most granular level - enabling you to adjust your settings based on occupancy patterns. In addition, you will receive immediate notifications when peak demand thresholds are met.

EnergyFlow CXL (Capex Lens) tracks electricity use on a load-by-load, or alternatively, on a tenant-by-tenant basis. Customers can use the sub-metering with CXL for tenant sub-billing, to track return on capex, and for measurement & verification (M&V) credits for LEED certification.

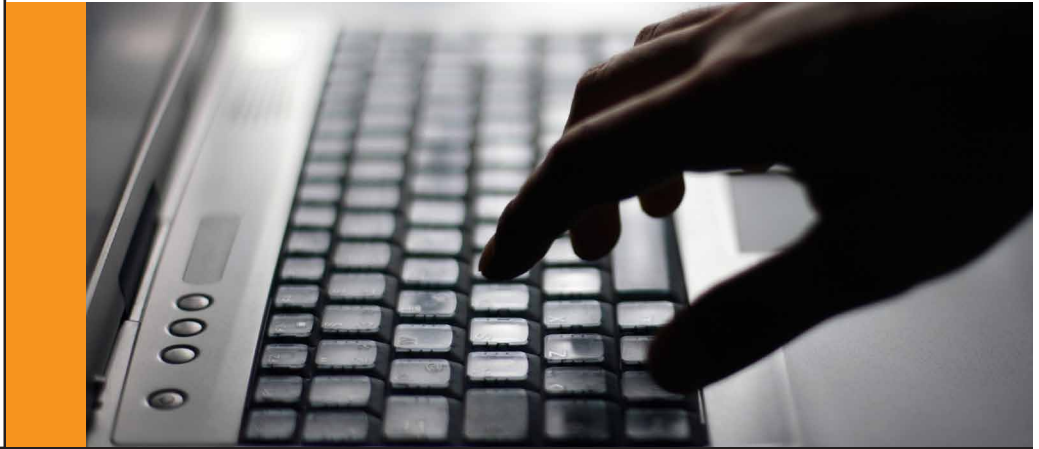


Monitor Multiple Loads with EnergyFlow CXL

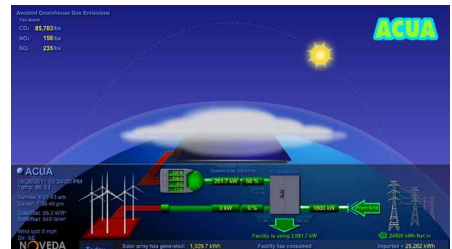


Monitor Enterprise Consumption with PortfolioTracker

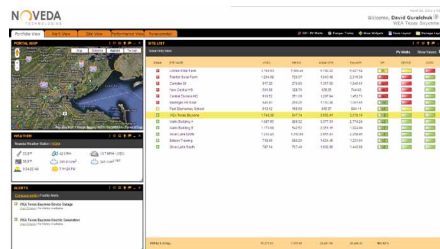
PortfolioTracker enables customers to monitor energy consumption across multiple sites from a single dashboard. The information is normalized for variables such as square footage to enable prioritizing of energy efficiency investments. In addition, energy consumption across properties can be aggregated to negotiate better pricing.



SunFlow Monitor[®] ensures that solar PV or wind energy investments perform at contract specifications and production guarantees. With monitoring from the string to the panel surface to the inverter, customers maximize their return on renewable energy investment, while minimizing operations and maintenance costs.

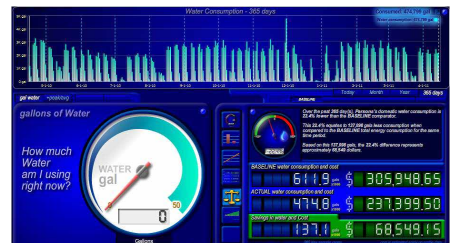


Maximize Return on Renewable Investment with SunFlow Monitor[®]



Monitor Renewable Portfolio with Operator's Portal

iQuatic provides web-based, real-time monitoring of water use along with leak detection and control. Using a patented smart learning adaptive system (SLAS), the iQuatic platform tracks water consumption patterns to detect leaks and controls them in real-time.



Monitor water use and water leaks with iQuatic intelligent water platform



Stakeholder Engagement and Education Tools

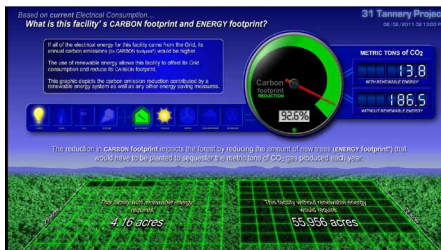
Educate stakeholders in energy and water conservation efforts and achieve savings at the plug load level, through Noveda's social media-based platforms, web widgets and competitions.

Achieving savings at the plug load level requires change in user behavior. Plug loads, which refers to office electronics such as PCs, devices such as coffee makers, and vending machines, account for as much as 40% of electricity used in a commercial building. Plug loads are decentralized and hence, difficult for facility managers to control.

iTerate is a low bandwidth platform for collaboration, using voice, video, and data. iTerate enables education and training in energy and water management, by leveraging real-time consumption data.



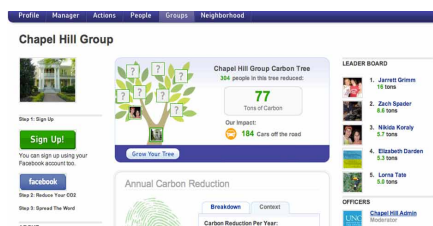
Enable collaborative training and education with iTerate



Display CO₂ emissions with Carbon Footprint Monitor

Carbon Footprint Monitor displays the carbon footprint in user-relevant context such as trees planted, cars off the road etc. and enables users to track the impact of their energy use on the environment.

Noveda's **MakeMeSustainable** platform enables companies and communities to leverage the viral power of social networking to engage and educate individuals in energy and water conservation efforts.



Mobilize stakeholders with MakeMeSustainable



Customer Successes

Noveda's actionable intelligence and analytics have resulted in sustainable and significant cost savings for a wide spectrum of customers.

New Jersey utility, PSE&G, to monitor **80MW** of Solar PV with [Portfolio Operator's Portal](#)

"Noveda's technology will enable us to continuously monitor the increasing number of solar installations and proactively provide operational and maintenance support" - *Al Matos, V.P, Renewables and Energy Solutions, PSE&G*



100-yr old NYC commercial building tracks energy efficiency initiatives with Noveda's [EnergyFlow](#) and achieves Energy Star accreditation

Client reduced energy use by 15%, and achieved Energy Star for 427,000 square foot building. EnergyFlow also enabled tracking of ROI on energy efficiency initiatives such as installation of a building automation system, HVAC retrocommissioning, and lighting fixture upgrades.



U.S university reduces energy use and promotes environmental literacy with [Noveda's Energy & Water Competitions](#)

Noveda developed virtual games connected to energy and water reduction in competing dorms. Social media was used to educate the students. In less than two months, the university saved more than \$70,000, and improved environmental literacy throughout the student body.



Liberty Science Center (LSC) reduces energy use by 40% with [Noveda's Energy Monitoring](#) and saves nearly \$800,000

LSC staff used real-time data to identify energy waste, track effectiveness of energy savings initiatives, and sustain savings. Savings were realized by adjusting HVAC settings (11% savings), adjusting lighting hours (25%), turning off booster pumps, etc.





AMERICAS

Global Headquarters

3434 Route 22 West,
Branchburg, NJ 08876
UNITED STATES OF AMERICA
+1-877-534-8655

EUROPE

Advanced Manufacturing Park,
Brunel Way, Sheffield,
South Yorkshire S60 5WG
UNITED KINGDOM
+44-114-254-1262

ASIA

Type I/7, Dr. VSI Estate,
Rajiv Gandhi Salai, Thiruvanniyur,
Chennai 600041
INDIA
+91-44-43060773

Find out how Noveda can help
you build:

- A better bottom-line
- A better market reputation
- A better future.

A future that is here & now.

info@noveda.com



NOVEDA
TECHNOLOGIES



FSC - CERTIFIED PAPER AND PRINT

