



The EnergyFlow-CXL provides web-based, real-time monitoring and display of electricity use, both on an envelope level and specific sub-metered loads on a granular basis.

Studies have consistently shown that the best way to conserve electricity use is to show people precisely how much they are using. With EnergyFlow CXL, customers can track electricity use on a load-by-load basis for multiple loads such as lighting, HVAC, plug loads etc., segregate and group loads, drive energy savings initiatives and monitor their impact in real-time. In addition, EnergyFlow CXL enables building owners to qualify for LEED Measurement & Verification (M&V) points.

Meaningful graphics, analysis based text/email alerts, and detailed reporting give you the answers, not just the details.

Customers

Whether you're a commercial or industrial enterprise, government or educational institution, we'll help you see energy through a different lens.

Reduce energy costs while making the world greener, one building at a time

Representative Examples:

- Retail giant uses CXL to track energy use on a load by load basis in its distribution centers, to identify energy load abnormalities and opportunities for savings

Key Features:

- Real-time monitoring and display of electricity use
- Web-based access to data, reported in one minute to one hour intervals
- Web based data storage at 1 minute intervals of historical consumption, demand
- Unlimited grouping of meters for various analytics
- Track individual loads (as many as 72 loads) against total facility consumption or against each other
- Verify engineering changes (ECM) implemented on specific loads
- Display current, daily, monthly, and 365 day usage data, peak and average demand per meter
- Customizable performance alerts, including notifications of peak demand periods
- Capability to collect data from all leading utility meters and building management systems
- UL listed data collection equipment
- Warranty for duration of subscription
- Used in conjunction with ASHRAE energy audits
- Qualifies for LEED measurement and verification points

Request a Free Demo

See for yourself how EnergyFlow CXL can help you to monitor and lower your energy use, and your carbon footprint. Email us today at sales@noveda.com

Real Benefits. In Real-Time.

Electric Panel



Noveda Gateway
Connects to the internet
by client LAN or EVDO
(cellular communication)

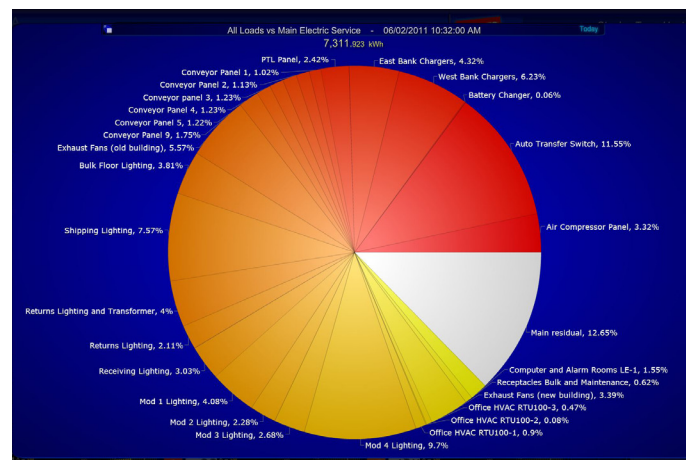
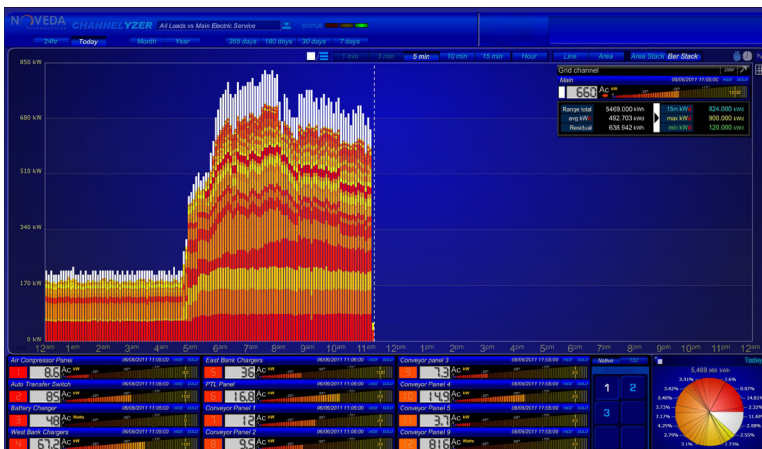


Noveda Secure Servers



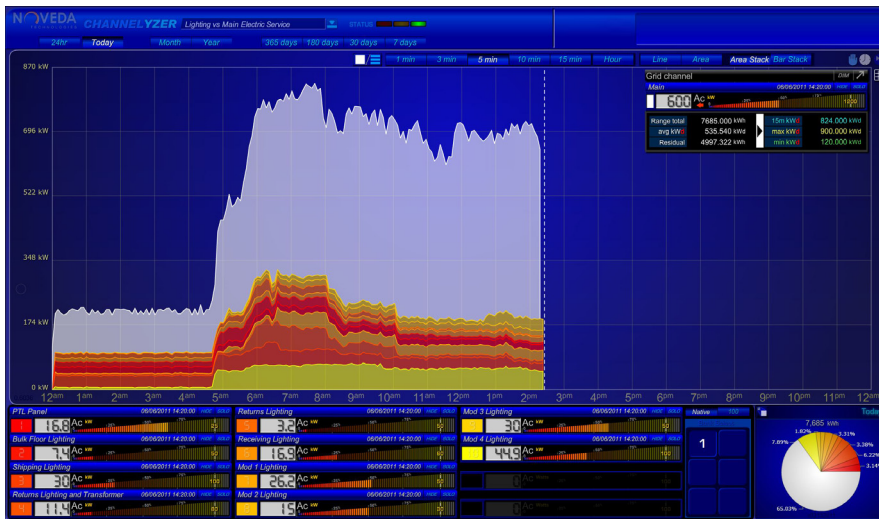
**Total aggregate electric
consumption in real-time**

**Electric consumption
segregated by individual
load**



Multiple analytical views of each individual load

Tracking lighting loads against building consumption for current day



Tracking lighting loads without building consumption for current day



Tracking lighting loads for past 24 hours with peak demand, min, and average use

